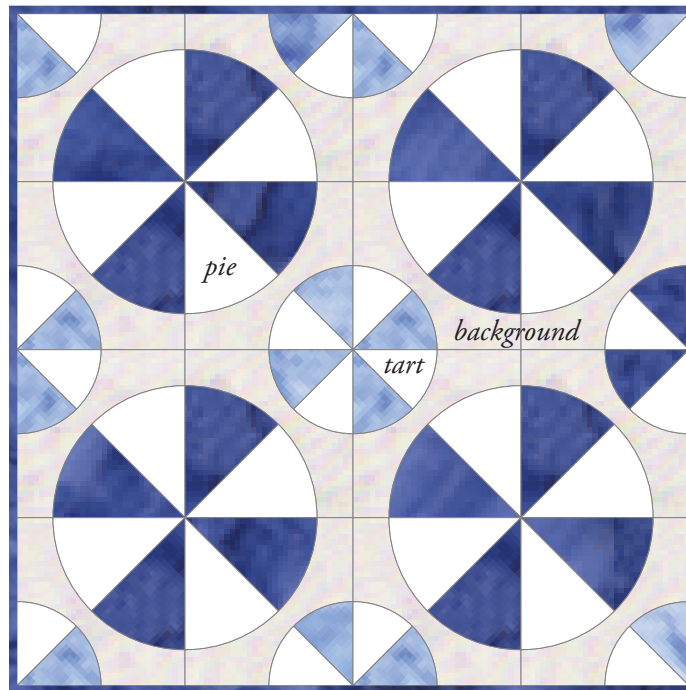


# Pie & Tarts *inklingo* Instructions

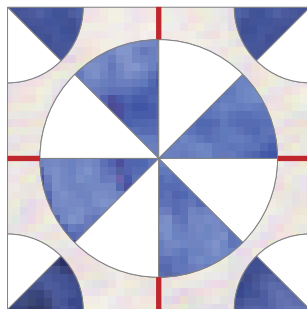


**Print, cut, sew**

The Inklingo Pie & Tarts Shape Collection is published with the cooperation of Sue Daley of [Busy Fingers Patchwork](#) in Australia, a specialist in English Paper Piecing.

These instructions are for piecing the shapes by machine. Hand piecers can use the same assembly steps, but a running stitch allows more flexibility in the sewing sequence and gives better pressing options.

Inklingo provides the background in 4 pieces (adding 4 short seams, red lines below) to eliminate the need for appliqué. There is also an option to print the background for back-basting, if you prefer to appliqué the circles.



*Please read all of the instructions before you begin.*

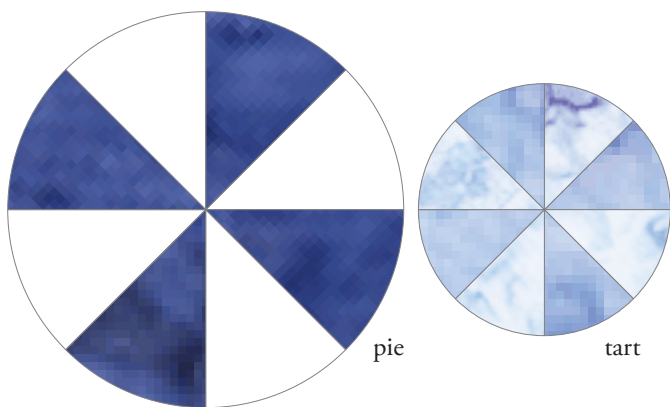
Use the [Inklingo Shape Collection](#) (PDF) to print the shapes on the fabric with your ordinary Inkjet printer. It simplifies the cutting and sewing. No measuring. No templates. You will love having stitching lines and matching marks printed on every piece.

## **Requirements**

- [Inklingo Pie & Tarts Shape Collection](#)
- color Inkjet printer or all-in-one (any kind)
- freezer paper (FP, for short)
- rotary cutter, two rulers, and a mat (or scissors)
- needles & thread for hand piecing, or sewing machine
- scissors
- iron and ironing surface

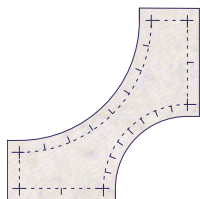
Inklingo is the quilting tool we've always wanted.

*inklingo*  
Love the lines. Quilt more.



### 1. The fabric

Each pie uses two fabrics and each tart uses two fabrics. The scrappy look is created by using each fabric once in a pie and once in a tart, but mixing them up so each pie and tart uses a different combination. You can mix it up more than that, of course!



*Use a variety of backgrounds too.*

Use the worksheets in the Shape Collection to decide how many pies and tarts you need, and record the details on [Monkey's Cheat Sheet](#).

Number of pies x 2 = number of different fabrics required.

Each piece of fabric must be at least 3.75 x 12.25 inches (after washing) to print 4 pie shapes and 4 tart shapes.

- Wash and dry the fabric so the FP will bond well enough to avoid jams in the printer.

*Monkey's Tip* If you fold the fabric neatly, there is no need to press until you iron on the FP.

- Print tests on the fabrics you will be printing to determine the best ink color. If you are using small swatches or scraps, just test some, as described in the handbook (page 36, or page H36 in the free shape collection).

First time printing on fabric? See Chapter 1 of *The Inklingo Handbook*, which is included in the free Shape Collection at [inklingo.com](http://inklingo.com). There are also helpful tips on the [All About Inklingo](#) blog.

### 2. The freezer paper (FP)

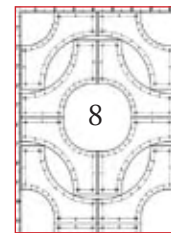
Cut a few sheets of FP (suggested sizes in the Catalogue of Shapes in the Shape Collection), and label each with the size.



3.75 x 12.25

Landscape

*See the suggested custom page sizes in the shape collection.*



8.5 x 11.75

Portrait

Each sheet can be used many times, but by cutting more than one, you can set up an assembly line for ironing and printing, peeling off and reusing sheets of FP when they come out of the printer.

*Monkey's Tips* Print the shapes on the paper side of one sheet of FP to check the size. When you are sure the size is right, you can cut several layers at a time. You can iron scraps of FP together to make new sheets too.

### 3. Print & Cut

Iron one sheet of FP on the right side of the fabric at a time, and trim the fabric to the same size as the FP with scissors. There are illustrations showing quick tips for preparing fabric sheets on the [All About Inklingo Blog](#) (17 January 2011). [lindafranz.com/blog/how-to-print-on-fabric-best-tips/](http://lindafranz.com/blog/how-to-print-on-fabric-best-tips/)

Insert each fabric/FP sheet in the printer so it will print on the fabric side. Many sheets can be printed in a few minutes.

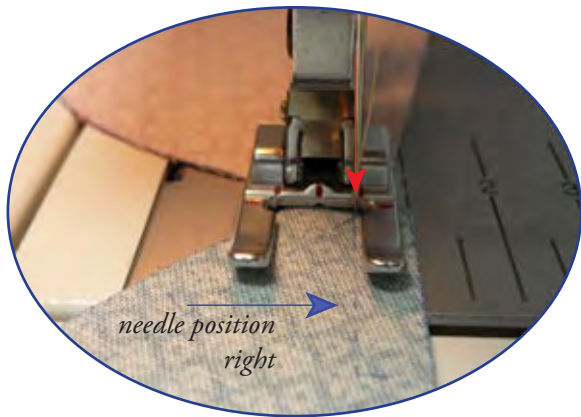
- ✓ ironed on both sides, no loose threads
- ✓ current page
- ✓ page scaling "none"
- ✓ custom size
- ✓ a glance at the Preview window before clicking print

Print 4 pie shapes and 4 tart shapes on each fabric. Consider fussy cutting some of the fabrics to add more interest. Instructions for fussy cutting are on the [All About Inklingo](#) blog too.

Print the background shapes. Use 4 or 5 different background fabrics for a scrappy look, if you wish.

New to custom page sizes? Just enter the numbers in the print dialog box. There are step by step instructions under the Support tab at [inklingo.com](http://inklingo.com).

Cut the shapes apart with scissors or a rotary cutter. No measuring. No templates.



#### 4. Chain Piece Pairs of Pie and Tart Shapes

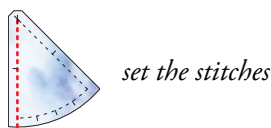
Chain piece the pie and tart shapes into pairs. Start at the pointed end and use the wheel to lower the needle exactly into the crosshair (red arrow above). This allows you to press the centers well. You can sew to the edge at the curved end, without stopping at the crosshair.

##### Monkey's Tips

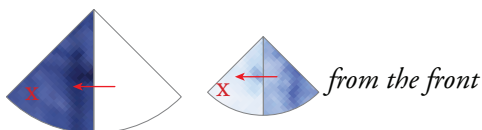
- Sew beside the stitching lines, in the seam allowance. This is a “scant” 0.25 inch seam. It allows for the thickness of the fabric when the seam allowances are pressed to the side.
- Use an open toe foot to make it easy to see the lines.
- If possible, move the needle position so you can guide the edge of the foot along a line (blue arrow above).
- Bias edges are stretchy. Be careful not to stretch them out of shape while you are stitching. Try not to handle bias more than necessary and never use steam to press it.

#### 5. Press

Press the pairs of pie and tart shapes identically. All of the seams should be pressed in the same direction, as shown in the diagrams. These pressing recommendations ensure that in the next steps the seams will be pressed in opposite directions and butt up against each other (called “opposing seams”) whenever possible. It works well.

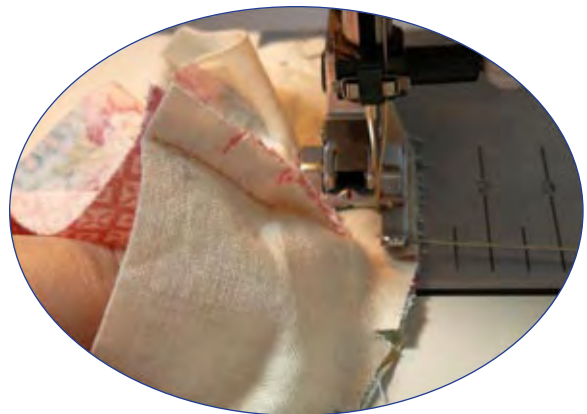


- Press the pieces together on the wrong side first to set the stitches, and then do the rest of the pressing on the right side.



- Finger press when you place the shapes on the ironing surface, with the shape marked x on top.

- Use a hot, dry iron on cotton setting, without steam.
- Press by lifting and lowering to avoid distortion. Do not slide the iron. Be careful to avoid stretching seams.
- Press seams to the side. Pressing seams open is a last resort, and if that is what you plan to do, the stitches should be closer together to strengthen the seam and reduce the possibility that the batting will migrate out between the stitches. The seam is not as strong as one with the seam allowances pressed to one side. The stitches are more likely to show, so use an appropriate thread color.
- Optional: Trim a scant eighth of an inch from each dark seam allowance to reduce the bulk. If you find it tedious, skip it. I find it relaxing while I watch TV, and I think it improves the appearance and drape of the quilt. Bias edges do not fray. There is a chapter on pressing and trimming in *The Inkingo Handbook*.

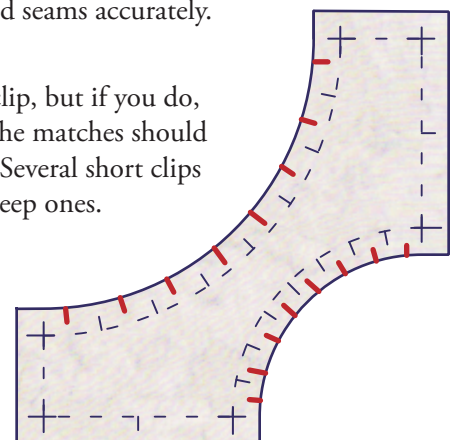


#### 6. Sew the Curves

I find it easiest to sew the pair of tart shapes to the background piece first, and then add the pie shapes.

You may not need to pin these curves, but if you do, pin at the matches. Inkingo's stitching lines, matching marks, and crosshairs—printed on the fabric—make it easier to align the pieces and stitch curved seams accurately.

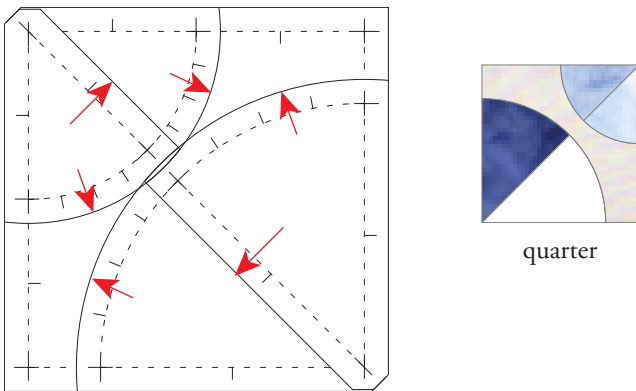
You may not need to clip, but if you do, shallow clips *between* the matches should be enough (red lines). Several short clips are better than a few deep ones.



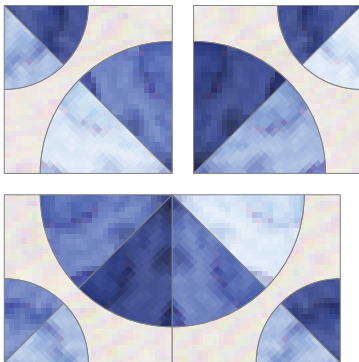
Monkey and I have some tips which apply whether you sew the curves by hand or by machine, or a bit of both.

- Stitch with the clipped seam allowance up, facing you. By hand, let the fabric curl down around your finger as you go. If you are stitching by hand, just pin one match at a time, and stitch from crosshair to crosshair, as described in *The Inkingo Handbook*.
- If you are machine piecing, you can stitch the curved seams edge to edge.

Press the curved seams toward the background (red arrows).



Each quarter of the block is pressed identically to the one above. This makes it easier to sew the blocks together.



### 7. Assemble the Blocks and Rows

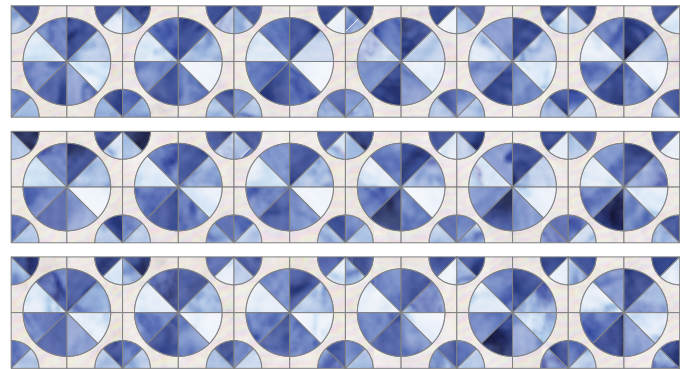
Sew the quarters into blocks and the blocks into rows.

If you are machine piecing, insert a pin in an up-down position exactly through the crosshairs where eight pieces meet, and then pin on either side. You may want to baste by machine across the intersection first to be sure everything is aligned correctly. Remember to sew your usual scant 0.25 inch seam, so you don't lose the points.



Press the seams in opposite directions whenever possible to make it easier to get opposing seams for perfect intersections.

- If you have problems with the intersections where many seams converge, consider hand piecing those seams. When Inkingo quilters combine hand and machine piecing in the same quilt, we call it a hybrid.



- Hand piecing allows you to “circle the intersection” to get a tight, perfect intersection without a little hole in the center, by passing the needle around through the seam allowances, one pair at a time, in the crosshairs, before backstitching and sewing the next section of the seam. The thread goes around the intersection one and a half times. There are illustrations in *The Inkingo Handbook*.

### IMPORTANT FREE RESOURCES

- The [All about Inkingo](#) blog
- The [Inkingo Yahoo](#) group
- The [Inkingo Welcome](#) page is a quick step-by-step guide to printing, and to the free resources on [inkingo.com](#).