

Bonnie Hunter's

# celtic solstice

mystery



Block 1 Make 25 or 61

## Clue # 6

### *THE TIME HAS COME!*

Happy New Year! It's time to put all these units together and show you Bonnie's design!

All of the shapes are printed from the Inklingo **Celtic Solstice Shape Collection** and it is at a special sale price for a limited time. Our best tips for Printing on Fabric are in Clue # 1. You can download it from the All About Inklingo blog.

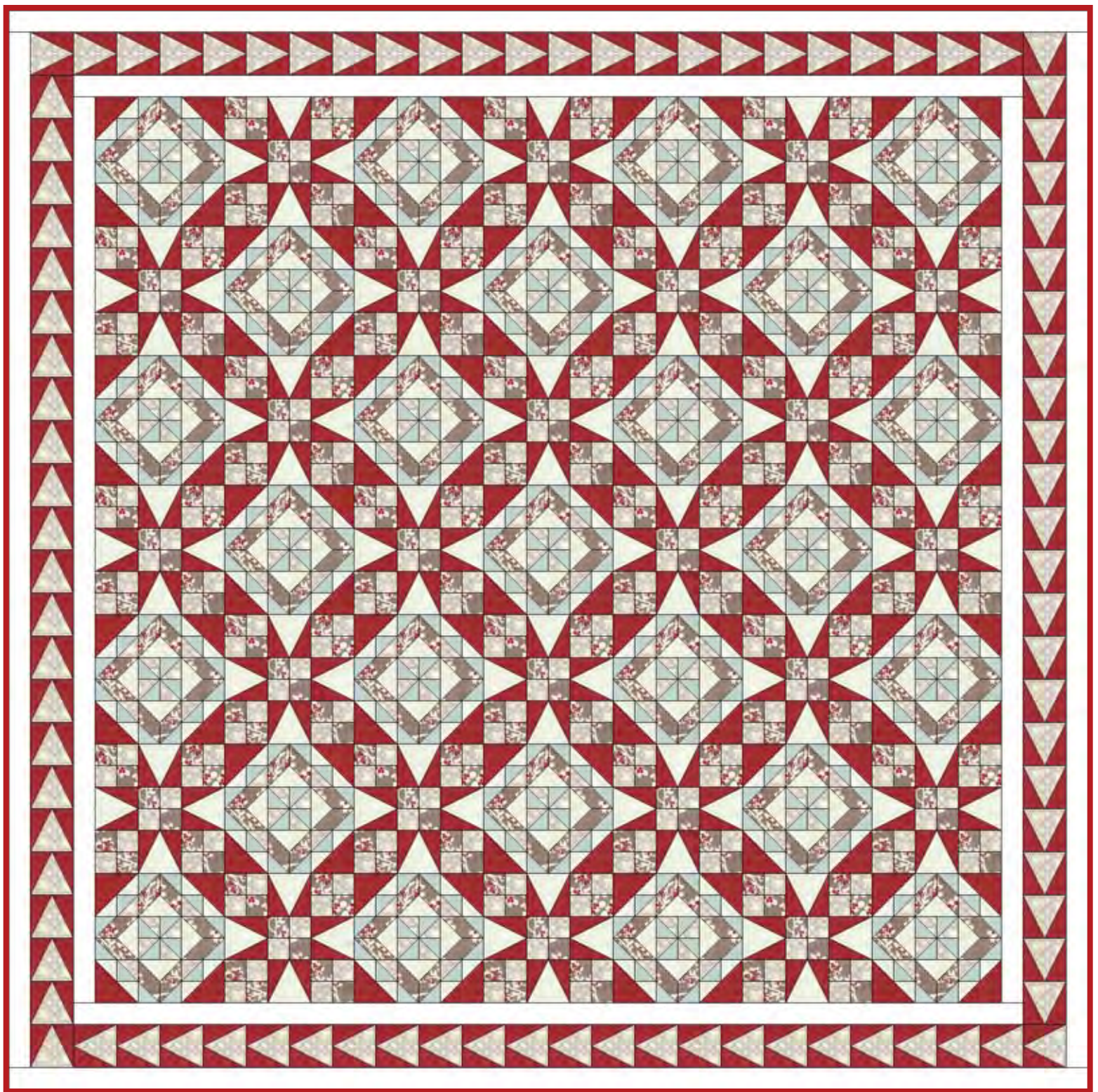


Border 92 or 140



Block 2 Make 24 or 60



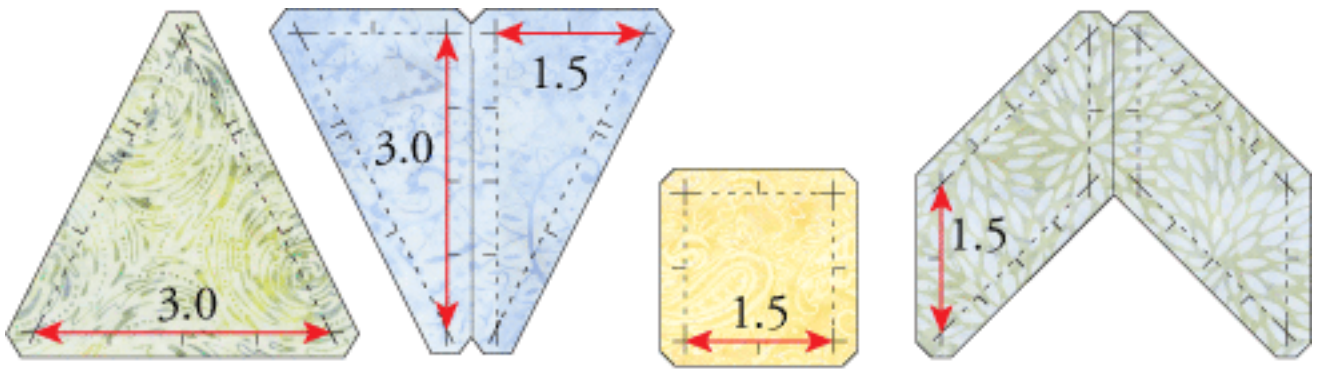


## *Clue # 6*

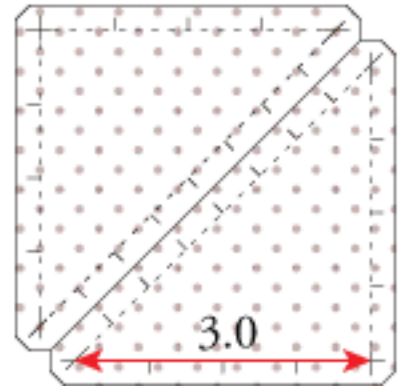
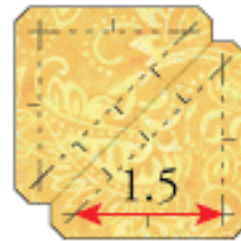
This is Bonnie's Celtic Solstice layout in my colors. There are a few of the infinite variations on the following pages, all 75 x 75.

To see the quilt in Bonnie's colors and to see her assembly instructions, please visit [Quiltville Quips & Snips](#) blog.





## Clue # 6



*Star of the Milky Way (Beyer 64-7)*

### VERSATILE SHAPES

The two blocks in Bonnie's design are Beyer 133-3 (54-40 or Fight) and a variation of Beyer 142-1 and 142-2. The units can be arranged to form many different designs on the same 3 x 3 grid.

Cathi at [Quilt Obsession](#) featured the Star of the Milky Way, and there are dozens of other blocks which can be made with these shapes.

More blocks will be featured on the [All About Inklingo](#) blog in the next few weeks. Please subscribe to the All About Inklingo blog, so you don't miss anything.

### ELECTRIC QUILT PROJECT FILE

You can also download an Electric Quilt project file (EQ6 or EQ7) to play with these shapes and the blocks. The file includes ten different 75 x 75 inch quilt layouts using 24 or 25 of each block and showing a variety of borders.

Do you know about [Design-Seeds.com](#)? For color inspiration like the photo (left), you can sign up for a daily email. (No affiliation.)



## ALL ABOUT INKLINGO

Print ultra-fine lines on fabric with your ordinary Inkjet printer

Feed on  Posts  Comments



### *RESOURCES ON THE BLOG*

There is lots of inspiration on the All About Inkingo blog!

You can download all of the PDFs for the Inkingo Celtic Solstice clues, including video.

There is a huge amount of information in the archive of the blog. We have collected some of the most helpful articles under the Top Ten Tutes tab.

If you have any questions as you go along, I am happy to help. I always answer email as quickly as possible.

[linda@lindafranz.com](mailto:linda@lindafranz.com)



Thank you to my amazing friend, Bonnie Hunter, for including Inkingo in this year's mystery. We love her enthusiasm for quilting and appreciate the way she has included more quilters in her mysteries by making the Inkingo Celtic Solstice Shape Collection available.

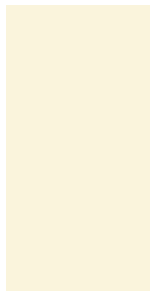
Most of all, we appreciate her friendship and support for Inkingo.

Happy New Year!

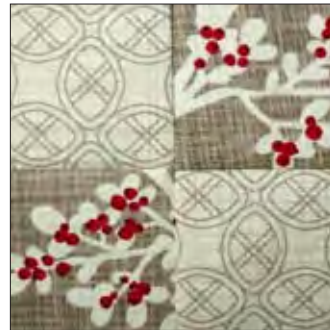
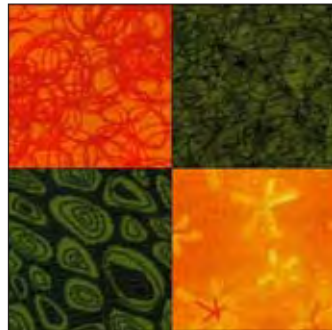
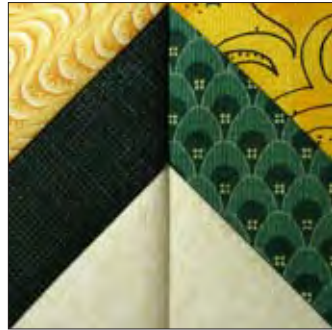
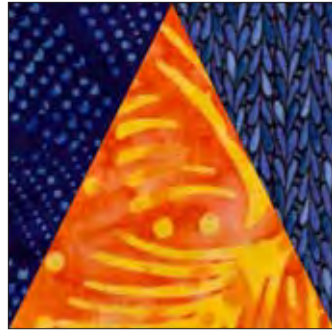




Bonnie's Colors

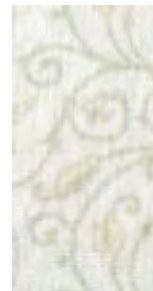


# Bonnie Hunter's Celtic Solstice Mystery



*inklingo*

Linda & Monkey







# *Clue # 6*

Variation 01



25



24



92



4

Plain inner border is  
3 inches (finished).





# *Clue # 6*

Variation 01a



25



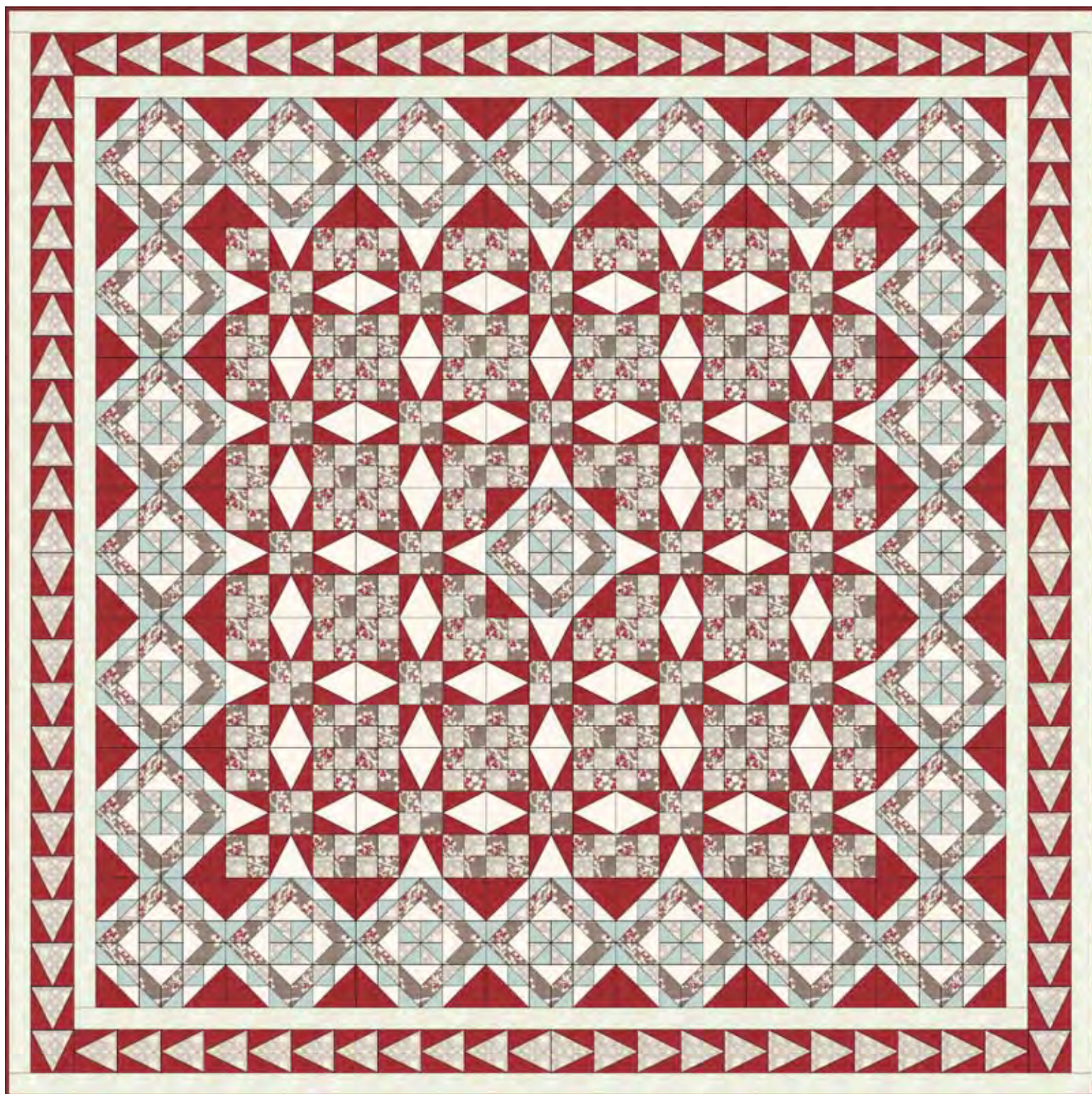
24



92

Plain borders are 1.5  
inches (finished).





# *Clue # 6*

Variation 01b



25



24



92

Plain borders are 1.5 inches (finished).





# Clue # 6

Variation 01c



25



24



92

Plain borders are 1.5 inches (finished).





# *Clue # 6*

Variation 02



25



24



92



4

Plain inner border is  
3 inches (finished).





# *Clue # 6*

Variation 02a



24



25



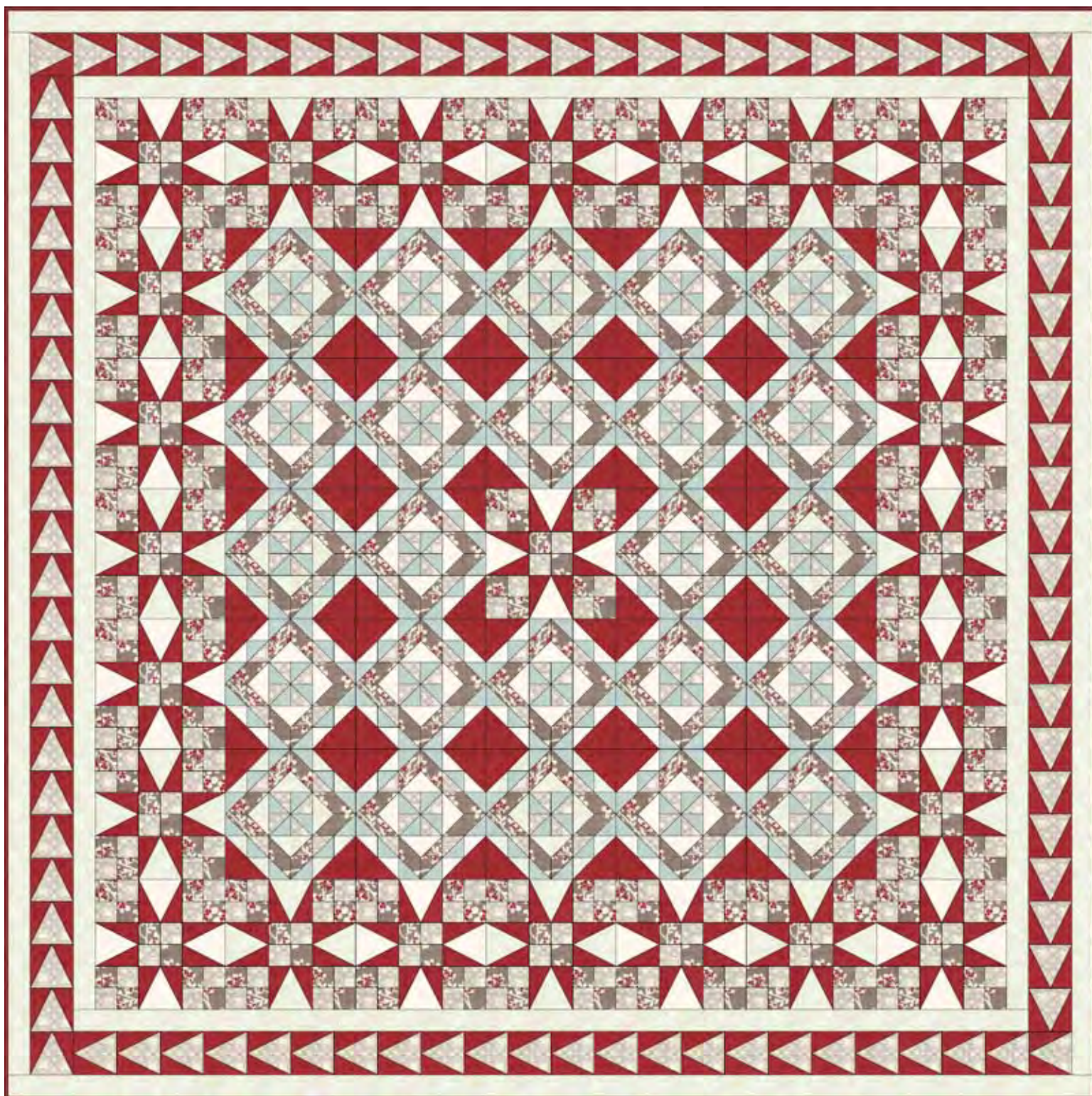
92



4

Plain inner border is  
3 inches (finished).





# *Clue # 6*

Variation 03



24



25



92

Plain borders are 1.5  
inches (finished).





# *Clue # 6*

Variation 03a



24



25



92



4

Plain inner border is  
3 inches (finished).