

The Case of the *secret garden* COTSG



Welcome to the First Inklingo Mystery Quilt!

Monkey and I had a great time planning this mystery quilt for you. We have made the clues as clear as possible without giving away the surprise at the end. We want you to have a lovely Aha! Moment when you see the last 7 or 8 clues.

Size

It's our first time doing a mystery quilt, so we are starting small. The quilt top is what I would call a baby size or a large wall hanging. We think it is very pretty and if you wanted a bigger quilt you could use the Secret Garden as a medallion and add pieced or plain borders.

If you think you want to make a bigger quilt, you might want to wait until the end, so you can start with the right yardage. You will be on your own if you want to change the size, but **Inklingo** makes it easy to see how much fabric you need, so you can do it.

The clues are all simple enough for an **Inklingo** beginner but we think there is something special for longtime Inklingoists too. Even if you are not doing the printing and sewing for the mystery, the tips in the clues will give you confidence with any Inklingo project.

Case File Notes

One of the benefits of the Case of the Secret Garden is that it takes the mystery out of the many resources on **inklingo.com** and the blog. We have lots of leads and hot tips for you.

Green text is clickable when you view the clues on the computer.

requirements



- Inkjet printer
- freezer paper (FP for short)
- rotary cutter, 2 rulers and a cutting mat (or scissors)
- needles & thread for hand piecing or a sewing machine
- scissors
- iron and ironing surface
- **Inklingo New York Wheel Shape Collection** (\$20 for a limited time)
- **Inklingo Sunflower Quilt Design Book** (free with NY Wheel)
- **Inklingo Diamond/Triangles/Square Shape Collection** (free)

If COTSG will be your first time printing on fabric, you can give yourself a head start by reviewing the first chapter of the handbook and learning **how to print Custom Page Sizes** with your printer. You won't be printing on fabric until Clue # 2.

Printing **Custom Page Sizes** is important because it allows us to use the fabric efficiently—often more efficiently than traditional methods and templates. Please review the detailed instructions for printing your first Custom Page Size under the Support & Goodies tab at **inklingo.com**.

Until recently every Inkjet printer had software that included the ability to print Custom Page Sizes. Recently HP made a change. You can read about it **in the FAQ on inklingo.com**.

It is a great idea to practice on scrap paper first, and it is a nifty way to “label” your freezer paper too, as described on page H41 of the free shape collection for **Diamond/Triangles/Square**.

Monkey says there are at least two hot leads on this page. A good detective follows up.

The **Inklingo Yahoo Group** is a friendly place. Your question might help someone who is too shy to ask.

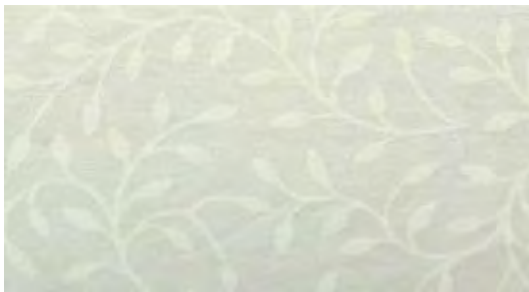
Fabric



Playing with fabric is one of the best things about quilting. It makes me happy to mess up my stash. Inklingo takes the work out of the preparation and simplifies the sewing, so you can afford to spend more time choosing fabric—if that is what makes you happy too!

It is best if all of the fabrics are a similar weight. Try not to include one heavy fabric. If you use batiks, make sure the other fabrics are not significantly heavier. You may find it slightly more difficult to sew curves with a batik because it does not have as much give.

Actual size



Since the NY Wheel blocks are 6 inches, the shapes look best with medium to small scale prints or tone on tone fabrics. Large prints would be lost in the small pieces.



4 Fabrics, 5 Yards

My COTSG uses only 4 fabrics. The biggest piece is 2 yards, so I was able to use my stash. The total requirement for the quilt top is about 5 yards and that allows a little extra for the test pages and a misprint or boo-boo.

Allow 3 yards for the backing and straight binding. Allow another 0.5 yards for binding cut on the bias. Use your favorite batting.

1. Light 2 yards (White)

I could have used fat quarters of several whites, but I had a perfect 2 yard piece in my stash thanks to a dear friend. It has been in my stash for several years and the vine is perfect for a garden. It is one of those rare white-on-whites that is not stiff or rubbery. I love it!

2. Medium 1 yard (Gray)

This gray seemed perfect for my Secret Garden. It reads almost as a solid, but it also provides a different scale, some curvy lines, and a flower motif. It must have been my lucky day.

You can print on scrap paper to make window templates to preview fabrics to ensure the scale looks good.

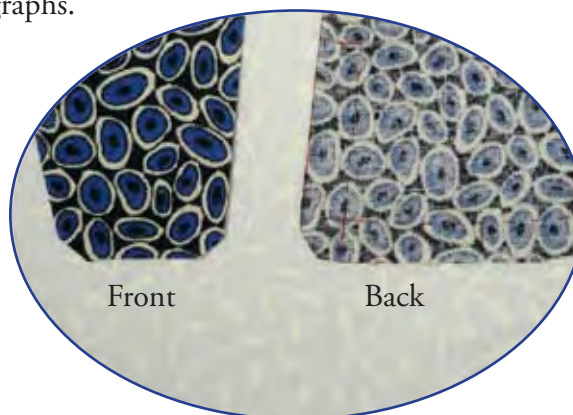


Actual size



3. Dark 1.25 yards (Dark Blue)

I was thrilled to find this dark blue in my stash. The design is small and reminds me of stepping stones, which are perfect for a Secret Garden, don't you think? When I tested, Color 46 was easy to see on the wrong side, although it doesn't show very well in photographs.



The most important thing for COTSG is having high contrast between the light, dark, and accent colors.

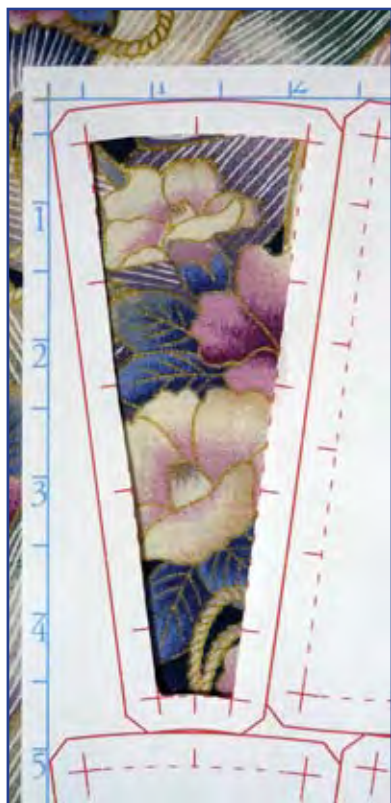


Always look at the wrong side of a dark fabric before you buy. If you have a choice among several suitable darks, choose the one that will be the easiest to print. Many very dark fabrics are light on the back, so Inklingo colors show clearly.

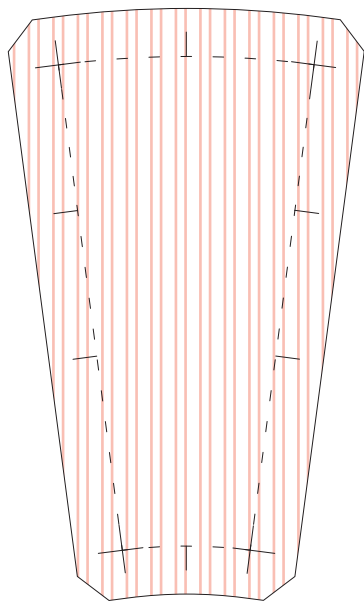
Did you know you can print on dark fabric? See all of my **best tips for printing on dark fabric** on the blog! That's a **Top Ten Tute**.

4. Accent 0.75 yard (more if fussy cutting) (Pink)

The best option for fussy cutting is the accent fabric. I did not have enough pink fabric in my stash that was suitable for fussy cutting, so I chose this print. I think those are petals from antique roses. (It's been buried in my stash for a very long time.)



Preview possible accent fabrics for fussy cutting opportunities and make sure you allow extra. Ordinary detectives use fingerprint analysis. We have window templates and Inklingo!



More Fabric Options

5th Fabric?

If you would like to fussy cut, make sure the design will look good when cut to the size of Shape F in NY Wheel (left). That's all we'll say for now. Allow at least an extra half yard of accent fabric if you plan to fussy cut. There are tips for fussy cutting/fussy printing in Clue # 2.

You could use two fabrics for the accent, one for the fussy cut shapes and one for the other accent shapes. Fussy cutting uses more fabric and it is an unsolved mystery how much more you might need, but it can create a fabulous effect.

Scrappy Accents?

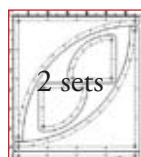
If you prefer scrappy, you could use several different fabrics instead of one accent fabric. Make sure they are all strong enough to contrast well with the light and dark fabrics.

Stripes?

Striped fabrics may be suitable since the layouts to print on fabric have straight grain running through the middle (left). Stripes may require more fabric because the direction is important.

Please read the detailed notes for choosing fabric on pages 50 -54 of the **Sunflower Quilt Design Book**. Monkey says while you are there, you might like to skim through the rest of the design book too. It has Monkey's fingerprints all over it.

Combo 4



7 x 7.75
Portrait

A



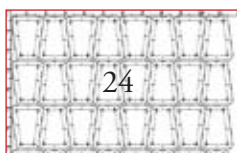
6.5 x 13
Portrait

B



5.75 x 11
Portrait

C



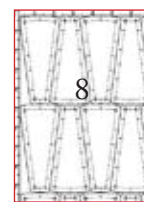
7.5 x 12.25
Landscape

D



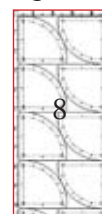
7.75 x 9.75
Landscape

F



7.25 x 10
Portrait

Q Circle



5 x 10.75
Portrait

1. Choose the fabrics.

This is your main assignment this week.

2. Wash the fabric and fold it neatly.

Very Best Tips on the blog. (Another **Top Ten Tute!** No ironing!)

3. Cut at least one sheet of FP for 7 Custom Page Sizes.

- 7 x 7.75 P for Combo 4 (4 sheets, if possible)
- 6.5 x 13 P for A (2 sheets, if possible)
- 5.75 x 11 P for B (2 sheets, if possible)
- 7.5 x 12.25 L for C (2 sheets, if possible)
- 7.75 x 9.75 L for D (1 sheet is enough)
- 7.25 x 10 P for F (4 sheets, if possible)
- 5 x 10.75 P for Quarter Circles (1 sheet is enough)

P is for Portrait, L is for Landscape in the Print Dialog Box.

If you have 2 or 4 sheets of FP in some sizes, you can set up an efficient assembly line from the ironing board to the printer.

Note If you are using scraps instead of yardage, wait to cut the FP. There are other Suggested Custom Page Sizes for each shape. For example, see page 19 of the New York Wheel shape collection for other possible sizes for printing shape B.

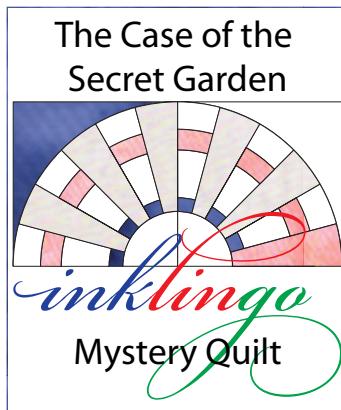
Our hottest leads for cutting FP are on page H26 of **the free shape collection** and tips for using scraps of FP are on page H41.

4. Get ready to print next time.

If you want a head start, you can print a test page of each fabric using the method on pages H32 - H37 of **the free shape collection**. You can wait for Clue # 2, if you like.

Test
Page

5 x 5
Portrait
(optional)



Are you excited about choosing your fabrics? We'd love to see your light, medium, dark and accent colors.

Part of the fun of The Case of the Secret Garden is sharing your progress with other detectives. Please tell your friends about the mystery.

You can connect with other quilters and share photos in the [Inklingo Yahoo Group](#) and on [Pinterest](#). I will create a new board so everyone can add their fabric choices.

If you can, get the Secret Garden badge (left) from [All About Inklingo](#) and put it on your website or blog.

There are [Inklingo Gift Certificates](#) for any amount under the [Shop](#) tab, if you would like to start a conspiracy with a friend to join in the COTSG.

Solving the Mystery

By the time you finish the Case of the Secret Garden, we think we will have taken the mystery out of [Inklingo](#).

Watch for Clue # 2 on the [All About Inklingo](#) blog next week. It is not a race, so you can wait until you see a few clues before you take the case.

If additional evidence or plot twists are uncovered, they will be on the [All About Inklingo](#) blog before the next clue is announced. It is a good idea for quilting detectives to subscribe to the blog, so they are sure to witness everything!

Leads in case file

Inklingo

<http://lindafranz.com/section/inklingo/62>

inklingo.com

<http://inklingo.com/>

All About Inklingo blog

<http://www.lindafranz.com/blog/>

New York Wheel Shape Collection

<http://lindafranz.com/shop/sunflower/25/product/ny-beauty-templates/146>

Sunflower Quilt Design Book (free with NY Wheel)

<http://lindafranz.com/shop/sunflower/25/product/sunflower-design/98>

FREE shape collection for Diamond/Triangles/Square

(includes the first chapter of The Inklingo Handbook)

<http://lindafranz.com/shop/beginners/3/product/inklingo-free-shapes/7>

Custom Page Sizes (under the Support tab)

<http://lindafranz.com/section/custom-page-sizes/43>

FAQ about Printers (under the Support tab)

<http://lindafranz.com/section/faq/question/45#q45>

Top Ten Tutes (on the All About Inklingo blog)

<http://www.lindafranz.com/blog/top-ten-tutes/>

Best Tips for Printing on Fabric (Top Ten Tutes on the blog)

<http://www.lindafranz.com/blog/how-to-print-on-fabric-best-tips/>

Printing on Dark Fabric (Top Ten Tutes on the blog)

<http://www.lindafranz.com/blog/inklingo-on-dark-quilt-fabric/>

Inklingo Yahoo Group

<http://groups.yahoo.com/group/Inklingo/>

Pinterest

<http://pinterest.com/inklingo/>

Gift Certificates (under the Shop tab)

<http://lindafranz.com/giftCertificates.php>

Shop

<http://lindafranz.com/shop/>