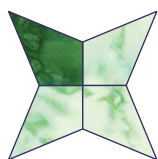
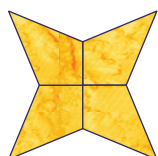


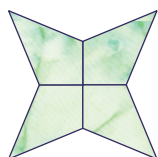
# inklingo IPQ



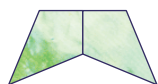
168



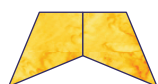
33



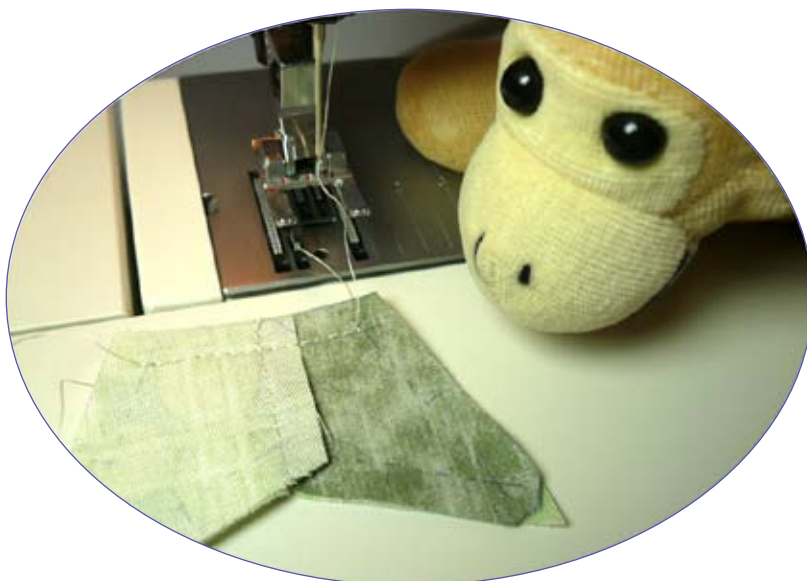
220



40



16



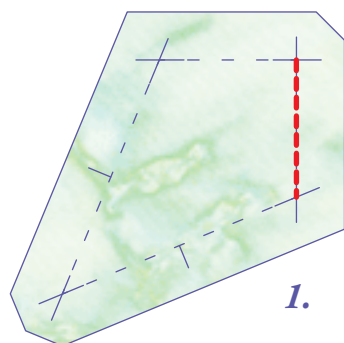
## Let's sew!

One of the beautiful things about the Inklingo Periwinkle Quilt is that it breaks down into easy units to hand piece on the go.

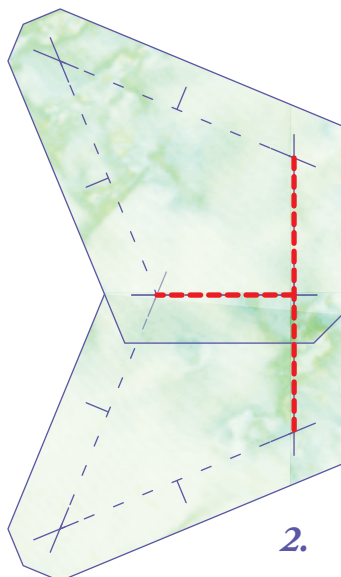
You can hand piece every seam *or* get a fast start by machine piecing four-patches first.

There are insets seams around every octagon, so it is necessary to sew from crosshair to crosshair. My best tips are in the video for Grandmother's Flower Garden on [YouTube](#).

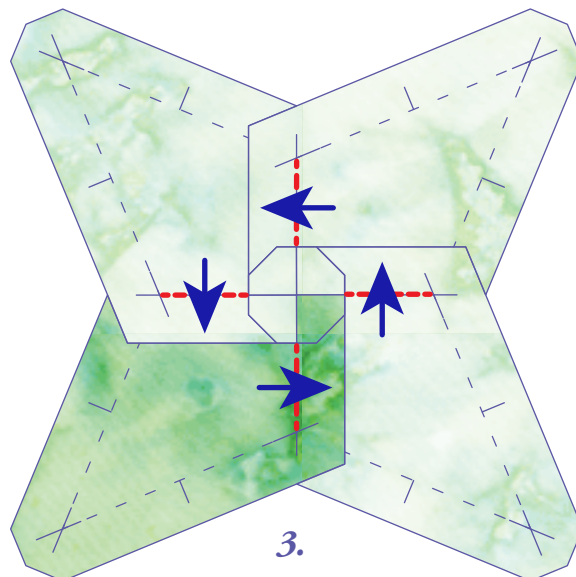
Whether you sew by hand or by machine, press all of the four-patches identically. The seam allowances should all be clockwise OR all be counterclockwise around the intersection.



*Sew two of these.*



*The first two seams are pressed in opposite directions.*



*Seams pressed counterclockwise around the intersection.*

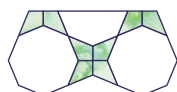
# inklingo IPQ



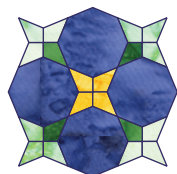
x 4



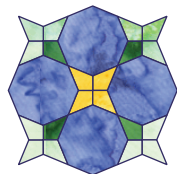
x 16 dark blue



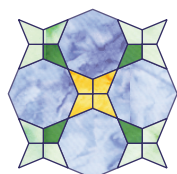
x 20



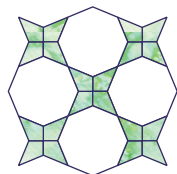
x 1 dark blue



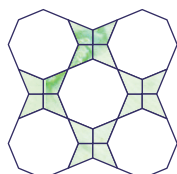
x 16 med blue



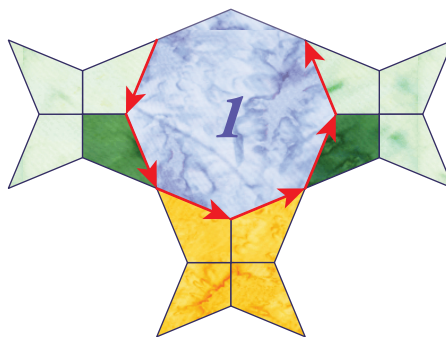
x 16 light blue



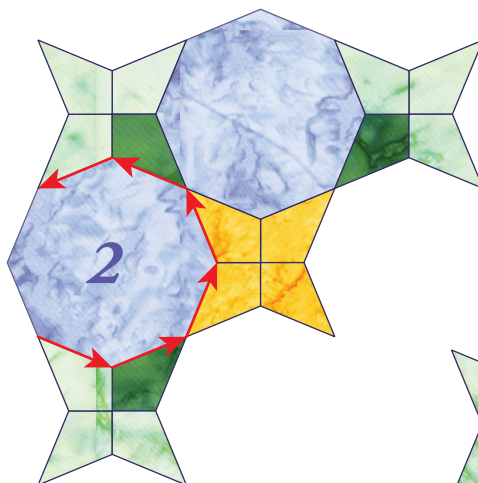
x 8 light green



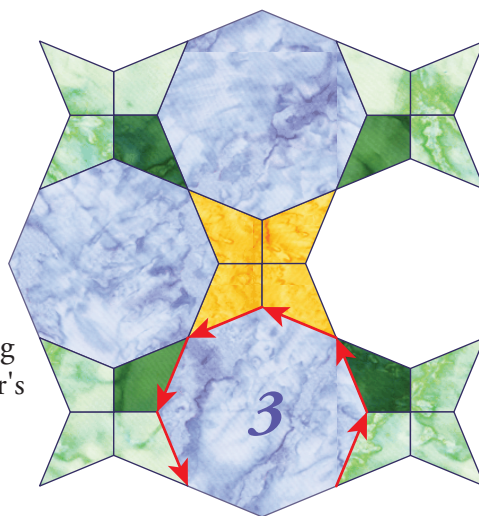
x 40 light green



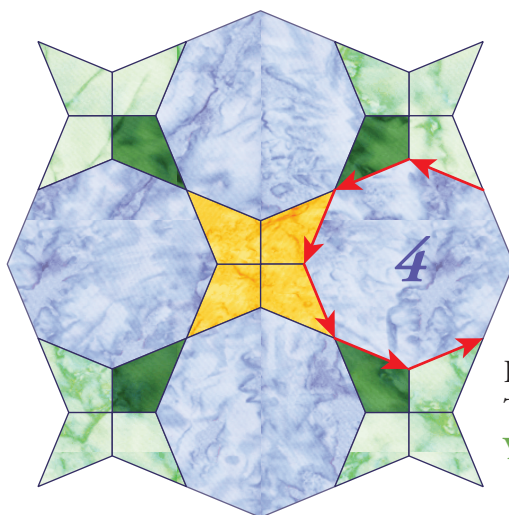
These are fun to sew and it goes fast if you plan a route.  
The red arrows show one option.



At the end of every seam, before you cut the thread, check to see if the next seam can be sewn continuously.



My best tips for continuous stitching by hand and for pressing are in my video for Grandmother's Flower Garden on [YouTube](#).



I recommend a finger pincushion. That's in another little video on [YouTube](#).