

# The Case of the Diamond *necklace*

COTDN



*Welcome back, detectives!*

In Clue # 5, you will print and sew diamonds and triangles (half diamonds) to make 6 half hexagons like Monkey's (above).

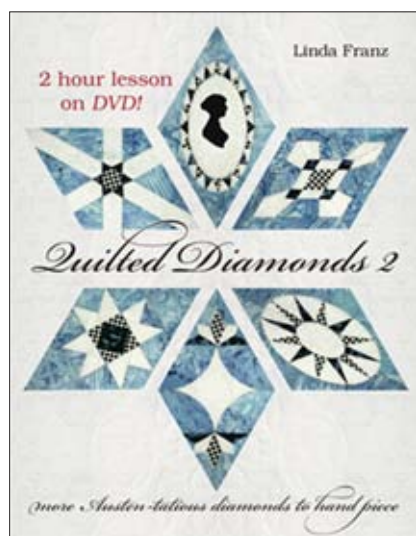
I hope you labeled the freezer paper in Clue # 2 because you can use it again. The printing is summarized on the following pages.



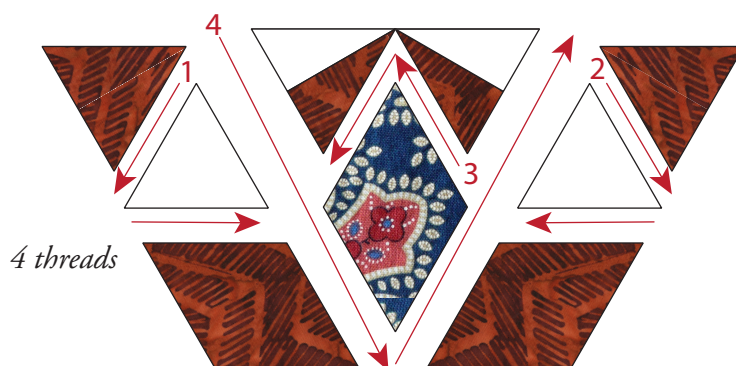
Make 6 of these. Make sure there is straight grain on the \* edges of the red triangles. Some quilters might recognize that as a clue about the COTDN design.

Any design is simpler when you break it down into parts (above). Print 42 red diamonds, 12 red triangles and 12 white triangles. Sew them to the 6 diamonds left over from Clue # 1 and the pieced triangles sewn in Clue # 3.

# #5 Due



*I demonstrated "continuous stitching" in the two-hour hand piecing lesson for QD2 in 2003. It is no mystery why this is still a favorite technique.*



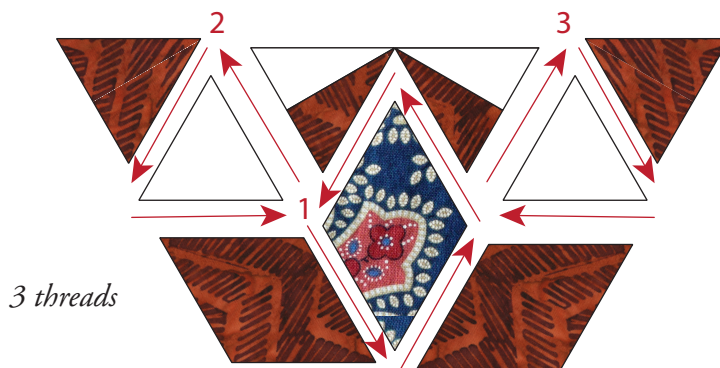
These units are perfect for more "continuous stitching" by hand. Just sew crosshair to crosshair, as usual, whether you sew by hand or by machine.

One of the lovely things about sewing from crosshair to crosshair is that you can sew the shapes together in any order.

"Continuous stitching" means that when you get to the end of a seam, you look to see if you can continue without breaking the thread, just by turning a corner.

If you plan your route, you can sew these units with only 3 or 4 threads. There are several options, so you won't get bored sewing six of these units. These are just two examples.

Lay the pieces out in order on your sewing surface to make it easy to stay organized and sew from crosshair to crosshair whether you are sewing by hand or by machine.



# Clue # 5

Use the "cheat sheet" below with the **Inklingo 60° Diamond 1.75 inch Shape Collection**.

This time you need to print diamonds and triangles.

There are more **Print Checklists on the blog** too.



Print Checklist

- ✓ fabric washed
- ✓ FP ironed on right side of fabric
- ✓ pressed with a hot, dry iron on both sides
- ✓ no loose threads
- ✓ inserted to print on fabric side
- ✓ current page
- ✓ page scaling "none"
- ✓ custom size
- ✓ a glance at the Preview window
- ✓ click print

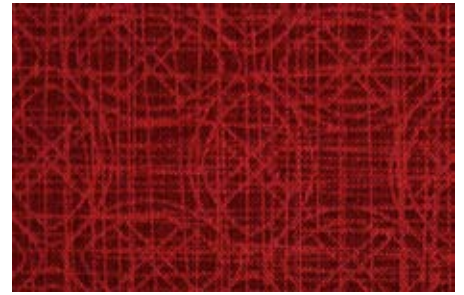
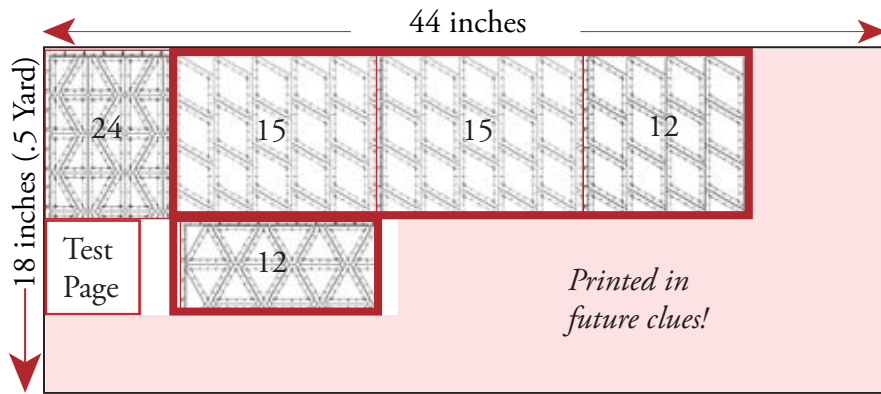
## inklingo CASE OF THE DIAMOND NECKLACE

Fabric/Shape	Number Required	Suggested FP Size	Other FP Sizes?	Notes
<u>Jewel accent (Red)</u>				
diamond	42	8.5 x 10.75 L 8.5 x 8.5 P	p15	2 sheets of 15 (layout 1 or 2) 1 sheet of 12
Layouts 3 and 4 are also suitable. FP sizes on pages 19-21)				
triangle	12	4.75 x 10.25 L	p31	1 sheet
<u>Platinum setting (White)</u>				
triangle	12	4.75 x 10.25 L	p31	1 sheet

I hope you saved the freezer paper you used for diamonds before.

There are tips about using and labeling freezer paper in the first chapter of *The Inklingo Handbook*. That chapter is full of little gems of info. It is so important that I included it in the free **Diamond Triangle Square shape collection** (pages H5 - H48), so everyone would have it.

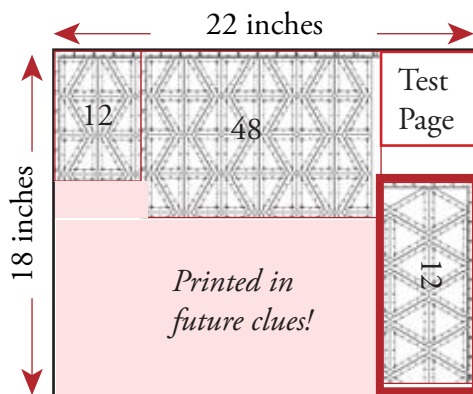




### ***Jewel Fabric (Red)***

42 Diamonds  
12 Triangles

*The shapes outlined by the red boxes are for Clue # 5.*



### ***Platinum Setting (White)***

12 Triangles



Until next time, Monkey suggests pressing your diamonds and storing them in a safe place with your other precious gems.

We think you will love it when you see how all these diamonds, triangles and hexagons fit together in the final COTDN design!

